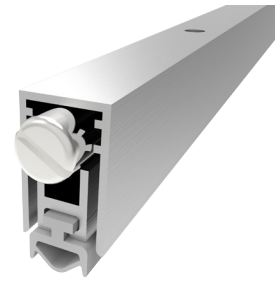
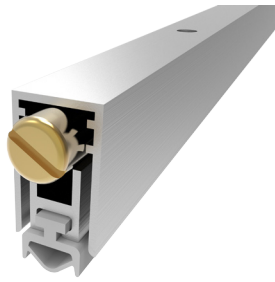


**AUTOMATIC DROP SEAL  
MASTER LINE - SERIES 12 MM**

**MAIN APPLICATION**  
WOODEN DOOR - ALUMINIUM DOOR - PVC DOOR  
STEEL DOOR - SECURITY DOOR

**DS-144A40RT**

**DS-144A40RTN**



SIZE	MAX SEAL GAP	MAX LENGTH	MIN LENGTH
12x20	12	1500	220

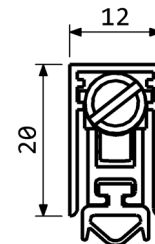
**FEATURES AND FUNCTIONALITY**

Air draughts, light and dust protection	Self levelling drop
Barrier-free access	Steel leaf springs mechanism
Energy saving	Low door opening and closing resistance
Durability up to 1000000 cycles	Suitable for fire doorsets

**MATERIALS**

Profiles	Aluminium alloy
Gasket	Self-extinguish silicone (working temperatures -40°C/+200°C)
Push button	Brass / Nickel plated brass
Mechanism	Steel

CODE	LENGTH mm	TRIMMING mm	BOX PCS
DS-144A40RT400	400	180	80
DS-144A40RT600	600	200	80
DS-144A40RT800	800	200	80
DS-144A40RT1000	1000	200	80
DS-144A40RT1200	1200	200	80
DS-144A40RTN400	400	180	80
DS-144A40RTN600	600	200	80
DS-144A40RTN800	800	200	80
DS-144A40RTN1000	1000	200	80
DS-144A40RTN1200	1200	200	80



**FIXING ACCESSORIES  
(OPTIONALS)**



PLASTIC COUNTER  
PLATE P1830

INOX COUNTER  
PLATE P2045KRV

INOX BRACKETS  
P2050

**QUICK AND EASY INSTALLATION**

Measure the groove length.  
Check the product trimming length in the table provided.  
Cut the seal on the opposite side of the activating plunger.  
Place the push button on the hinge side.  
Extract the mechanism and fix the aluminium case into the groove by screws. Reinsert the mechanism up to the locked position.  
Lateral fixing options: the seal can be fixed throught the inox brackets P2050.  
Lift height adjustment: screw (to decrease) or unscrew (to increase) the push button by a flathead screw driver and find the optimal position opening and closing the door while the seal covers the gap along the entire door length.

DIMENSIONS IN [mm] - THE MANUFACTURER RESERVES THE RIGHT TO MAKE TECHNICAL CHANGES WITHOUT NOTICE